

HabasitLINK[®]

M2670 Flat Top Heavy Duty 1" MTW

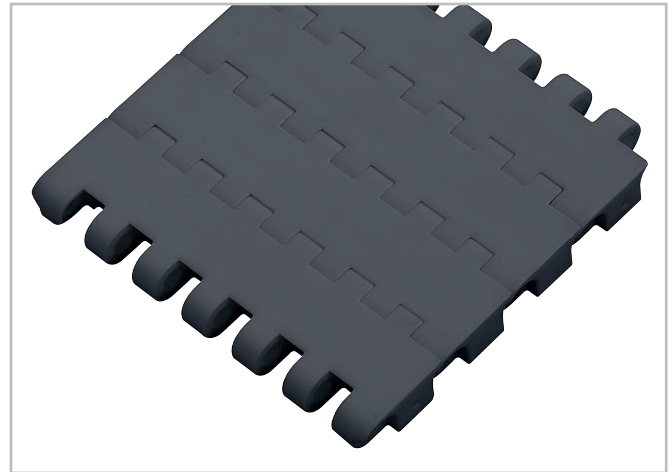


Your Source For Habasit
Belting And Chain

www.StilesEnterprises.com • 1-800-325-4232

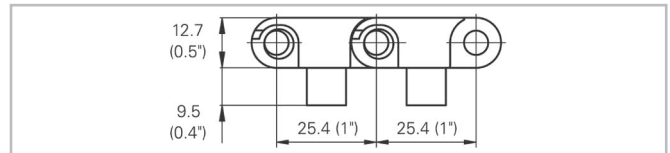
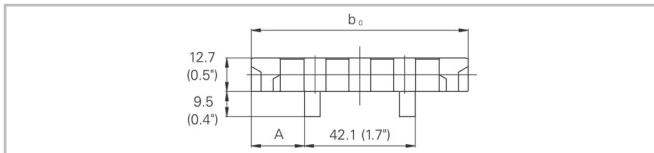
Description

- Mold to width heavy duty belt
- Imperial widths
- 12.7 mm (0.5") thick
- High strength and stiffness
- 0% open area
- Closed hinge
- Rod diameter 6 mm (0.22")
- Smart Fit rod retention
- Double row solid and split sprockets
- Two versions:
 - M2670Kxx (modules without tabs),
 - M2670Kxx-T20 (modules with 2 tabs)



Available accessories

- For standard guiding profiles, refer to the Habiplast[®] brochure



Belt data

	Nominal belt width b_0		A		Belt material	Rod material	Nominal tensile strength F_N straight run		Belt weight m_B	
	mm	inch	mm	inch			N	lbf	kg/m	lb/ft
M2670K03-T20	82.6	3.25	20.1	0.8	POM	PA	3200	720	1.16	0.78
M2670K03-T20	82.6	3.25	20.1	0.8	POM	PBT	2200	495	1.16	0.78
M2670K03-T20	82.6	3.25	20.1	0.8	PP	PA	1800	405	0.81	0.54
M2670K03-T20	82.6	3.25	20.1	0.8	PP	POM	1800	405	0.81	0.54
M2670K03-T20	82.6	3.25	20.1	0.8	PP	PP	1700	383	0.81	0.54
M2670K04-T20	114.3	4.5	36.0	1.4	POM	PA	4500	1013	1.62	1.09
M2670K04-T20	114.3	4.5	36.0	1.4	POM	PBT	3400	765	3.62	1.09
M2670K04-T20	114.3	4.5	36.0	1.4	PP	PA	2600	585	1.13	0.76
M2670K04-T20	114.3	4.5	36.0	1.4	PP	POM	2600	585	1.13	0.76
M2670K04-T20	114.3	4.5	36.0	1.4	PP	PP	2300	518	1.13	0.76
M2670K06-T20	152.4	6.0	55.1	2.2	POM	PA	6100	1372	2.21	1.49
M2670K06-T20	152.4	6.0	55.1	2.2	POM	PBT	4600	1035	2.21	1.49
M2670K06-T20	152.4	6.0	55.1	2.2	PP	PA	3800	855	1.54	1.03
M2670K06-T20	152.4	6.0	55.1	2.2	PP	POM	3800	855	1.54	1.03
M2670K06-T20	152.4	6.0	55.1	2.2	PP	PP	3200	720	1.54	1.03
M2670K07-T20	190.5	7.5	74.1	2.9	POM	PA	8000	1800	2.67	1.79
M2670K07-T20	190.5	7.5	74.1	2.9	POM	PBT	5700	1283	2.67	1.79
M2670K07-T20	190.5	7.5	74.1	2.9	PP	PA	5000	1125	1.86	1.25
M2670K07-T20	190.5	7.5	74.1	2.9	PP	POM	5000	1125	1.86	1.25
M2670K07-T20	190.5	7.5	74.1	2.9	PP	PP	4800	1080	1.86	1.25

The belt weights are indicated for belts with tabs, the weight of belts without tabs are lower by circa 0.05 kg/m (0.03 lb/ft).

Real belt widths are in most cases 0.1% to 0.3% smaller.